



MESSAGE FROM THE GENERAL MANAGER

# BALANCE

One valuable lesson I have learned over the years is that life requires balance. I'm not referring to the type of balance that's necessary to clean out the spouting without falling off of the roof; I'm talking about the need to focus our energy and attention in numerous directions each day so the various aspects of our lives can exist in relative harmony. Family should always be a priority, and we must never underestimate the value of spending time working and playing as a family. Yet our jobs require a tremendous amount of our time, so we can provide for ourselves and those we love. The communities in which we live also need us to work with our friends and neighbors for the betterment of all. And let us not forget about God and the effort we should devote to doing His will on this earth during our short time here. All of these areas of our lives are important, and each demands our time, so we are required to perform a continuous balancing act.

Your co-op's management team and directors must also utilize a balanced approach when providing safe, reliable, and affordable power to the members. Safety can never be compromised, because we must ensure that each of our employees returns to his or her family every

day. Our power must be reliable, because electricity is a necessity in our world. Yet safety and reliability come at a cost, and that is reflected in the rates we charge.

While the structure of our rates has changed over the years, the directors and management do not implement changes without a lot of analysis and discussion. Believe it or not, we have done our best to "hold the line" on rates, and the typical member pays slightly less today for 1,000 kilowatt-hours of electricity than in 2012! However, declining sales and higher power and equipment costs may soon change that. But I promise you that the need for new poles, clearing of right-of-way, and everything that goes into ensuring safe and reliable electricity for our members is always balanced with the impact that rate changes will have on our members.

So take some advice from this old man ... maintain a healthy balance in your life ... and get somebody younger to clean out that spouting! God bless!



Jerry Kackley  
GENERAL MANAGER/CEO





# Family Fun Day!

**Saturday, Oct. 6**

12–3 p.m. at Deerassic Park  
14250 Cadiz Road, Cambridge



**Free food:**  
Hot dogs  
Chips  
Ice cream  
Water

**Activities will include:**

- ◆ Fishing
- ◆ Kids' games
- ◆ Canoe/kayaking
- ◆ Inflatables
- ◆ Soft-tip archery tag
- ◆ Deer viewing
- ◆ High-voltage safety demonstration

**Educational booths, including:**

- ◆ Energy wall







Adventure, learning, and family quality time — at Guernsey-Muskingum Electric Cooperative, we think all of these are important to incorporate into your life. That's why we're hosting Family Fun Day on Saturday, Oct. 6, 2018, from noon to 3 p.m. at Deerassic Park in Cambridge.

Whether you want to brush up on archery skills, learn how to make your home more energy efficient, enjoy decadent ice cream, or simply watch the grazing deer at the park, there's something for everyone.

Founded in 1996, the park has an education center on 130 acres, with a 3-acre pond, trails, and 15,000 square feet of pavilion space. The Deerassic Park Education Center also maintains an educational herd of deer for youth and families to view, while the main building houses a unique collection of mounted animals and artwork. Included in the collection are replicas of the world-record Beatty Buck, harvested by Mike Beatty, and the one-of-a-kind Megaloceros (Irish Elk) replica from world-renowned taxidermist Ken Walker of the enormous creature that went extinct over 10,000 years ago.

Come out and join GMEC for a day of outdoor family fun, where you can simultaneously take away a new factoid about your co-op and take dozens of photos of your children in action. Free food, water, and ice cream will be provided.

Please call GMEC at 800-521-9879 for more information. We hope to see you there!





# IT PAYS TO BUY **QUALITY!**

## TWO WAYS TO SAVE:

### **1** Rebates — For water heaters purchased at Guernsey-Muskingum:

Prices include:

- FREE delivery
- FREE maintenance (except cleaning), including parts and labor
- FREE pressure relief valve
- FREE radio-controlled switch

50-gallon      Dimensions 28" dia. x 52" height  
(Weight = 230 lbs.)

\$625 wholesale cost  
\$250 member rebate  
\$375 net member cost, plus tax

80-gallon      Dimensions 32" dia. x 59" height  
(Weight = 345 lbs.)

\$850 wholesale cost  
\$250 member rebate  
\$600 net member cost, plus tax

Installation may be available for an approximate charge of \$120.

### **2** Cash back — for electric storage water heaters purchased elsewhere, with installation of a radio-controlled switch (hybrid water heaters not eligible)

\$100 cash back for:

- 50-gallon
- 7-year warranty (or longer)
- 91 percent or higher Energy Factor

\$50 cash back for

- 40-gallon
- 7-year warranty (or longer)
- 91 percent or higher Energy Factor



**Vaughn (stone-lined)  
Water Heaters**  
**11-year warranty**  
**3" foam insulation**  
**4" hand-hole cleanout**

**Manufactured  
set at 125 degrees**

To qualify for cash-back incentives and discounts, members must allow the free installation of a radio-controlled switch. Prices and rebates subject to change. Call Guernsey-Muskingum for more details at 800-521-9879.

### Geothermal heating and cooling system — \$300 rebate

We have a \$300 rebate to help pay for the most efficient underground heating, cooling, and hot water system available today. To be eligible, the geothermal unit must be ENERGY STAR®-rated and have a radio-controlled switch installed on the unit and on the electric water heater of at least 40-gallon capacity. Over 280 of our members are using geothermal.

### Dual fuel — \$300 rebate

If you install a new add-on electric heat pump with a fossil-fuel backup and have an electric water heater of at least 40-gallon capacity, you are eligible for a \$300 rebate. Radio-controlled switches must be installed on both the heat pump and water heater. Please call your cooperative for details. Over 890 members are using dual fuel.

### Cool returns — \$100 rebate

Are you having central air conditioning installed or a new electric heat pump with electric resistance heat backup? Allow your cooperative to install a radio-controlled switch and receive a \$100 rebate check. Over 170 members are using cool returns.

### ENERGY STAR refrigerator/freezer rebate

Did you buy a new ENERGY STAR refrigerator or freezer? We may have a \$100 rebate for you. Call member services for details.

### Water heater with a hole

The four-inch hole in the side of our tank is great for cleaning out sediment. This rebated tank is available for free delivery. We also have \$50 or \$100 checks to send you if you purchase a tank somewhere else. Give us a call for details.

### Water heater installation available

If you purchase your water heater from GMEC, our member services technician, Tim Fisher, will install your water heater for an additional charge. Give us a call.

### Radio-controlled switch

“What a deal!” If you don’t already have a radio-controlled switch (RCS) for your electric water heater of at least 40-gallon capacity, please call, and Tim Fisher will install one at no charge. Over 5,600 GMEC members have an RCS on their water heaters. The switch entitles you to a discount and free maintenance (except cleaning), including parts and labor, on your electric water heater. Some exclusions apply; call us for details.

### GenerLink™

We want you to use your portable generator safely. Call the member services department at GMEC and ask them about GenerLink. GenerLink eliminates the use of extension cords and other connections that can be dangerous to members and linemen. Over 200 members currently have a GenerLink installed at their homes.

### Meter reading

You can enter your meter readings online at our website, [www.gmenergy.com](http://www.gmenergy.com). You can also mail your readings or call us 24 hours a day with meter readings.

### Co-op Connections® card

The Co-op Connections card is free to all GMEC members, and one card can be used by the entire family. The card can be used to receive discounts nationwide on lodging, entertainment, dining, and more. Visit [www.gmenergy.com](http://www.gmenergy.com) and click on the link to explore the possible discounts available to you.

### Is your name and account number here?

If it is, call the cooperative's office and receive a **FREE** home change-out to compact fluorescent light-bulbs (limit six bulbs). Thanks for reading the local pages of Ohio Cooperative Living.

#20-0056-40-02..... R David Crawford  
#30-0129-06-01..... Joanne Sowers  
#40-0463-05-00..... Randy L Simmons  
#60-0516-42-02..... Bart M Peeper  
#70-0071-03-04..... Kimberly S Brannon  
#10-0050-42-01..... Ronald Hogue







CO-OP NEWS

Karaoke “Country Style” winners

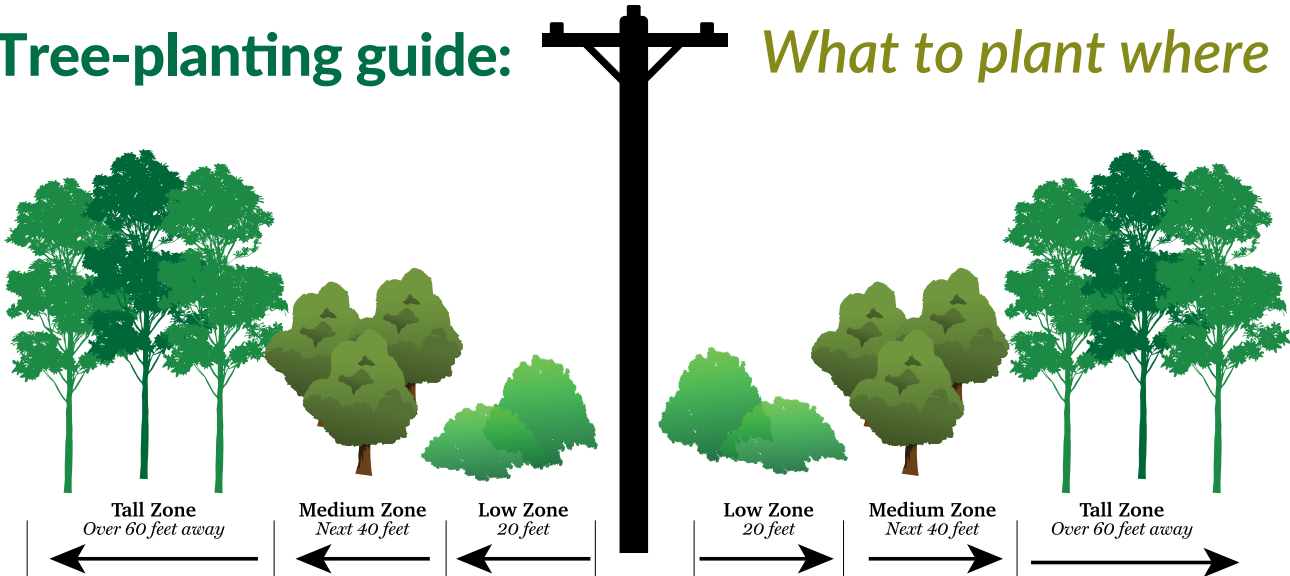
The Karaoke “Country Style” contest was an opening-day event sponsored by Guernsey-Muskingum Electric Cooperative, Inc. at the 172nd Muskingum County Fair. Singers in four age categories competed with their favorite tunes. In the under 18 division, the winner was Hannah Tonneman of Glenford. The winner for the 18 to 45 age group was Cati McGee of Zanesville. The winner of the 46 to 65 age group was Perry Meyer of Westerville. The winner in the over 65 age category was Regan Valentine of Zanesville. Each winner received a \$50 gift card, and all participants received a sandwich and drink coupon to use at the fair. Judges for the evening were Keith Taylor and Teresa Bennett, and sound was provided by Sandy Groves.



From left to right: Hannah Tonneman, Cati McGee, Perry Meyer, Regan Valentine



Tree-planting guide: *What to plant where*



Tall Zone	Medium Zone	Low Zone—Utility Easement Area	
Tall or large trees with maximum height of over 60 feet.	Plant medium trees with a maximum height of 30–60 feet.	(Under wires)—It is better not to plant in this area. If you do, plant shrubs only or small, low-growing ornamental trees with a maximum height of 15 feet.	GMEC will maintain 20 feet in any direction around and anything above energized primary conductors on a five-year cycle.

## Nondiscrimination Statement

In accordance with Federal civil rights law and U.S. Department of Agriculture (USDA) civil rights regulations and policies, the USDA, its Agencies, offices, and employees, and institutions participating in or administering USDA programs are prohibited from discriminating based on race, color, national origin, religion, sex, gender identity (including gender expression), sexual orientation, disability, age, marital status, family/parental status, income derived from a public assistance program, political beliefs, or reprisal or retaliation for prior civil rights activity, in any program or activity conducted or funded by USDA (not all bases apply to all programs). Remedies and complaint filing deadlines vary by program or incident.

Persons with disabilities who require alternative means of communication for program information (e.g., Braille, large print, audiotape, American Sign Language, etc.) should contact the responsible Agency or USDA's TARGET Center at (202) 720-2600 (voice and TTY) or contact USDA through the Federal Relay Service at (800) 877-8339. Additionally, program information may be made available in languages other than English.

To file a program discrimination complaint, complete the USDA Program Discrimination Complaint Form, AD-3027, found online at [http://www.ascr.usda.gov/complaint\\_filing\\_cust.html](http://www.ascr.usda.gov/complaint_filing_cust.html) and at any USDA office or write a letter addressed to USDA and provide in the letter all of the information requested in the form. To request a copy of the complaint form, call (866) 632-9992. Submit your completed form or letter to USDA by:

- (1) mail: U.S. Department of Agriculture  
Office of the Assistant Secretary for Civil Rights  
1400 Independence Ave., SW  
Washington, D.C. 20250-9410;
- (2) fax: (202) 690-7442; or
- (3) email: [program.intake@usda.gov](mailto:program.intake@usda.gov).

This institution is an equal opportunity provider.

## Stealing Electricity and Meter Tampering Are Crimes

Since August 1978, a revised Ohio law has been in effect covering theft of utility service and tampering with utility equipment. The statute provides that a person does not have to be seen tampering with a meter to be held responsible for such action. Prior to the revision in the law, it was difficult to prosecute a person for meter tampering unless the action was witnessed.

In addition, in prosecution for a user's reconnecting a device that was disconnected by a utility, such activity now is considered prima-facie evidence that the user intended to defraud the utility.

The law defines theft of a utility service as a first-degree misdemeanor if the value of the stolen electricity, plus any utility equipment repair, is less than \$150. It's a fourth-degree felony if the value is more than \$150 or if the offender was previously convicted of the charge. Tampering convictions carry similar penalties.

Tampering is defined as "to interfere with, damage, or bypass a utility meter, conduit, or attachment with intent to impede the correct registration of a meter or the proper function of a conduit or attachments."

Conviction can bring from six months in jail and a \$1,000 fine to five years in jail and a \$2,500 fine.

Meter tampering costs all of us. It costs the cooperative, and it costs you. And it's downright dangerous. If you witness someone tampering with an electric meter, contact your cooperative office. Stealing electricity is a crime, and anyone caught violating the law will be prosecuted.



# GUERNSEY-MUSKINGUM ELECTRIC COOPERATIVE CURRENTLY SPEAKING

## CAPITAL CREDITS



## Official Notice of Intention to Reallocate Patronage Capital

The following is a listing of former members of Guernsey-Muskingum Electric Cooperative, Inc. who received service from the cooperative in prior years. Attempts were made to mail capital credit checks to these former members in 2014. These capital credit checks have remained unclaimed for at least four years.

The cooperative's Code of Regulations provides that capital credit payments that remain unclaimed for four years shall, after

proper notice is given, be reallocated to the current margins of the cooperative. After such reallocation, these unclaimed payments will no longer be available for payment to the former members listed.

If you have any information on any of the names published in this listing, please call the cooperative's office at one of the numbers listed below. Thank you for your help in locating our former members.

New Concord  
**740-826-7661**

Toll-free  
**800-521-9879**

A T & T, Store #Oh2480  
Adams Gary L  
Adams James  
Ameritech Cellular Serv  
Anderson James V  
Atlas Roofing Co Inc  
Barcus Raymond L  
Barlow Robert  
Barnes David H  
Barnes Larry  
Barnhart Electronics  
Barringer Mark E  
Bates Betty S  
Bates Charles T  
Baus Eleanore R  
Bebout George  
Beckley Robin E  
Beebe Troy  
Bentley James A  
Berea Oil & Gas Corp  
Bergdorf Donald G  
Betz Naomi  
Bichard James R  
Blake Betty L  
Bobo's Boat Shop  
Bonnett Richard C  
Boucha Howard C  
Bowman Donald E  
Bowman Melinda K  
Brenneman Karl H  
Brill Tracie L  
Brock Todd  
Brown Albert F  
Brown Noel B  
Brown W L  
Brumley Paula  
Bryan Cindy K  
Bryan Scott A  
Burson Jay B

Busch Peter L  
Buzard Gard Sjr  
Byler Samuel  
Calhoun Todd  
Campbell Stewart Ejr  
Carless Resources Inc  
Carpenter M  
Carrell James W  
Cavendish Petro Of Ohio  
Chris Oil Co  
Christa Oil Co  
Civin James  
Clark Steve  
Clayton Carolyn  
Clifton Charles  
Coen Clifford  
Coleman Gregory  
Concord Sq Ltd-Sewage-S  
Consol Resc Of America  
Cramer Cathy S  
Crown Oil Field Supp L  
Crum Kenneth C  
Crum Robert L  
Cullison Bruce H  
Curl Thomas A  
Cutlip Jack  
Daniels Robert  
Daum Tom E  
Davis C L  
Davis Jerry L  
Davis Lori L  
Davis Rex A  
Daymut Robert  
Dickey Cynthia D  
Dilbeck Jennifer  
Dilley James C  
Dominos Pizza  
Don's Shell  
Douglas Michael L

Doup Richard G  
Dover Mariel  
Dreblow Lewis M  
Dudley James E  
Eastern States Oil & Gas  
Echelberry Lillie  
Enterprise Gas & Oil  
Evans Todd A  
Fayette Drilling Co  
Fickey Jack  
Findley Oil Co  
Finkle Joseph B  
Finn Dave  
Fisher Allen L  
Fisk Arthur  
Forge Allen C  
Frye Michael R  
Gaspro Energy Inc  
Gatewood Joe P  
Gem Energy Corp  
Gessel Charles G  
Gibson Rita  
Graewe Rita  
Greathouse Robert C  
Hanks Mabel A  
Hardy Lawrence  
Harris Charles K  
Hartinger James H  
Hassinger James Jr  
Hayes James M  
Hecker Deloris  
Heddleson Daniel  
Hehr Daniel W  
Heiser Daniel L  
Henry John E  
High Adam F  
Hines Kelly S  
Hixson Walter O  
Hoskinson Doris

Hrinko Kristy L  
Ignatious Dan J  
Inland Drilling  
Jackson Elaine  
Jacobs Jerry L  
James Marilyn  
Jamison Lawrence R  
Jenkins Ohmer R  
Jess Arthur E  
Johnson Daren  
Johnston Eddie Lsr  
Joy Douglas C  
Junk Robert R  
Kachmarik Andrew  
Keim Leroy N  
Kitz Fred  
Klingensmith Philip Dsr  
Knapp William A  
Kocher Dennis  
Krofft John E  
Kusnirak Phyllis  
Kuss Catherine M  
Landprovest Inc  
Larrison Robert G  
Lashley Dale A  
Lautenschuetz Bonnie  
Lauvray Thomas A  
Leader Development  
Corp  
Lee Thomas  
Leopard Jeffrey J  
Lehman Robert  
Linscott Marci A  
Little Barbara B  
Logan Frances  
Lonsinger June E  
Loomis Hardy  
Lyons Mel  
M-B Operating Co Inc

Magbee Ercel  
Marsh Adam E  
Marshall Elizabeth A  
Martin Richard M  
Mason Shirley  
Massie William  
Matisko Pauline  
Mauler Richard E  
Mcbride Arlene L  
Mcconnell James  
Mcdonald H K  
Mcfin Oil Co  
Mcgee Barbara A  
Mcnerney Donald J  
Mendoza Larry  
Merling Eric S  
Metz Charalet  
Mickler Claude J  
Miller Bill R  
Miller Norbert V  
Mills Earl  
Mission Gas  
Mitchell Mark D  
Mohr James P  
Monk William L  
Moore Faye  
Moore Michael L  
Moore Priscilla A  
Morrison Lawrence  
Mount Martha J  
Muskingum Mine  
Muskingum Mining Inc  
N-Starr Energy Inc  
Nalle Wayne R  
Nankishore Nalini N  
Natland Energy  
Nelson Sharon E  
Nextel Communications  
Nichols Charles



Nichols H S  
 Norman Edith E  
 Ohio Inns, Inc  
 Oliphant Rebecca R  
 Paden Dan  
 Pallet Recycling  
 Pandin Joseph  
 Pascoe Candi L  
 Patrick Paul R  
 Pattison Mark R  
 Patton J R  
 Pemco Gas Inc  
 Pennington Harley  
 Perry Jason H  
 Peterson David K  
 Petronelis Russell A  
 Peyton Charles E  
 Phillips James  
 Phillips Norman  
 Pickenpaugh Ned  
 Pierce Dan  
 Pitcock Edwin M  
 Plaster Jerry

Porter Sandra M  
 Prince Michael  
 Q State Oil & Ref Corp  
 Q State Oil Ref Corp  
 Quillia Dan G  
 Rainer Alvin M  
 Reid Bobbie  
 Rice Tim  
 Ringer Don E  
 Riverside Cable Co  
 Roach James L  
 Robertson James  
 Robynhaven Inc.  
 Roe C C  
 Rogel Ronald  
 Roger C Dupke Oil Co In  
 Roth Harris J  
 Rudish Mary E  
 Russell Alice  
 Rutter Larry D  
 Ryan Steve  
 Sabol Larry Ajr  
 Sansom Noah

Saylor Brian E  
 Schwartz Levi  
 Scott James Dsr  
 Scott Jessica A  
 Sears Fred T  
 Seeley Harry Rii  
 Seneca Marina  
 Settles Diana L  
 Shalosky Patrick K  
 Smith Bob J  
 Smith Cara A  
 Smith Janet  
 Smith Kevin T  
 Smith Laurie  
 Smith Margaret  
 Smith P A  
 Spencer Richard L  
 Sprinkle Kermit L  
 Stalnaker Richard  
 Stanfield Ted  
 Stanger Stephen D  
 Steese Gerald C  
 Steiner Theodore

Stephens James V  
 Stevens Ray A  
 Stewart Kristin  
 Stimpert Sandi J  
 Stockdale Ruth  
 Stocker & Sitler Inc  
 Sturgill Robert E  
 Summerfield John  
 Suttle Seymour  
 Taylor Earl R  
 Thomas Linda M  
 Thorla C D  
 Thull Edward  
 Todd Donald Sr  
 Troyer Rod  
 Tuckosh Eric  
 Ulrich Everett  
 Verdugo Antonio P  
 Verizon  
 Walton Steven B  
 Warne Vince  
 Watkins Marion O  
 Watson James E

Watson Sheila M  
 Welch Catherine  
 Welker Gregory A  
 Well Care Services Inc  
 Western Reserve Telepho  
 Western Union Tel Co  
 White Darlene A  
 Wickham Delbert  
 Wiggins David  
 Wilde Walton W  
 Williams George E  
 Williamson Colleen J  
 Wilson Douglas  
 Wolfe John  
 Wood Thomas A  
 Workman Barry E  
 Young Gary J  
 Zak Jason  
 Zerucha Debbie E

October is  
**BREAST CANCER**  
 Awareness Month

**BREAST CANCER**



## GUERNSEY-MUSKINGUM ELECTRIC COOPERATIVE CURRENTLY SPEAKING



A PROGRAM OF AMERICA'S ELECTRIC COOPERATIVES

## Join us at the polls on Nov. 6

Our co-op's No. 1 priority is providing our consumer-members with safe, reliable, and affordable electricity. Doing that, however, requires a lot more than stringing and maintaining power lines throughout our service territory.

Among other things, it also requires political engagement. That may seem far removed from our core mission, but it's absolutely essential to serving those who rely on us.

That's why we're participating in a national program with other electric cooperatives called Co-ops Vote.

Co-ops Vote is an initiative that encourages all co-op members to participate in national, state, and local elections while educating political candidates and elected officials about the important role played by electric cooperatives in their communities.

The National Rural Electric Cooperative Association, the service organization representing the nation's electric co-ops, launched Co-ops Vote in 2016 as a national, nonpartisan get-out-the-vote effort to help drive rural voter turnout in the 2016 presidential election.

Through this program, electric co-ops realized they had a unique advantage: As co-ops, the civic virtue of voting is in our DNA. We show concern for community — one of the seven cooperative principles — through participation in our democracy.

Co-ops have another advantage. Elected officials and decision-makers across the political spectrum trust us because of the work the electric cooperative family has put into political engagement. When we all get involved, we can make things happen — politically and in our local communities.

Our participation in Co-ops Vote helps to ensure that issues that are important to electric cooperatives remain part of the national discussion — and are supported by our elected officials. But Co-ops Vote isn't just for co-ops. It's for co-op members, just like you.

You can participate by registering to vote and committing to cast your ballot on Nov. 6. If you're interested in getting more involved, just give us a call or visit [www.vote.coop](http://www.vote.coop) to learn more about the upcoming elections and access online tools that can help you participate. We look forward to seeing you at the polls on Election Day!



# A full house of energy savings

## ATTIC

In many homes, attic insulation is one of easiest, least expensive and most effective ways to reduce your energy use. Contact us to find out how much insulation is right for your home. In colder regions, a properly insulated attic also reduces the chance of ice dams.

## DEN/OFFICE

Plug all electronic gadgets, such as phone and laptop chargers, picture, gaming consoles, and BluRay players, into a power strip with an on/off switch. When not in use, turn the power strip off to eliminate all those energy vampires.



## BEDROOM

Ceiling fans can help save energy all year long! In the summer, fans should rotate counterclockwise to push air down, creating a cooling flow. In the winter, fans should rotate clockwise to help draw cool air up toward the ceiling and push the warm air that naturally rises down to you and your family.



## BATHROOM

Take a short shower instead of a bath. Short showers use much less water, and you'll also save energy by not heating all that extra water!



## LIVING ROOM

Smart thermostats learn how you and your family live and automatically adjust temperature settings based on your lifestyle to keep you comfortable while saving you money.



## KITCHEN

Make sure your burner isn't bigger than the pan and use flat-bottomed pans to maximize surface contact with the burner. Don't preheat the oven until you're ready to use it. Minimize the number of times you open and close the refrigerator or oven door.



*Want to learn about additional ways to save energy?  
Contact us for more energy efficiency tips!*





## GUERNSEY-MUSKINGUM ELECTRIC COOPERATIVE CURRENTLY SPEAKING



# Mark your calendar for Guernsey-Muskingum Electric Cooperative's Holiday Workshop

Wednesday, Nov. 7 at 6 p.m.

You're sure to have fun!

Refreshments and door prizes provided!

### GUERNSEY-MUSKINGUM ELECTRIC COOPERATIVE, INC.

#### CONTACT

800-521-9879 | [www.gmenergy.com](http://www.gmenergy.com)

#### OFFICE

17 S. Liberty St.  
New Concord, OH 43762

#### OFFICE HOURS

Monday–Friday, 7:30 a.m.–4:30 p.m.

This institution is an equal opportunity provider  
and employer.

#### ELECTRIC RATES

Farm and Home Service rate schedule R-1\*  
Service Availability Charge — \$22/mo.  
First 500 kWh/month — 12.169¢/kWh  
Over 500 kWh/month — 10.845¢/kWh

Seasonal Residential Service  
rate schedule S-1\*

Service Availability Charge — \$360/yr.  
First 800 kWh/yr. — 19.769¢/kWh  
800 to 6,000 kWh/yr. — \$10.645¢/kWh  
Over 6,000 kWh/yr. — 10.845¢/kWh  
(Minimum annual charge — \$360/yr.  
for service between March 1, 2018,  
and Feb. 28, 2019)

Commercial Service rate schedule C-1\*  
Service Availability Charge — \$24/mo.  
First 1,500 kWh/mo. — 12.569¢/kWh  
Over 1,500 kWh/mo. — 10.845¢/kWh

\*Rider T — Kilowatt-Hour Tax applies to  
all rate schedules and must be added to  
the rates shown.

First 2,000 kWh/mo. — 0.465¢/kWh  
Next 13,000 kWh/mo. — 0.419¢/kWh  
Over 15,000 kWh/mo. — 0.363¢/kWh

### BOARD OF DIRECTORS

Jay Gray  
Chairman

Brian Hill  
Vice Chairman

Ed Bay  
Secy.-Treasurer

John Enos  
Duane Parks  
Jim Rex  
Shirley Stutz  
Directors

Jerry Kackley  
General Manager/CEO

Joseph P. Boeckman  
Counsel

