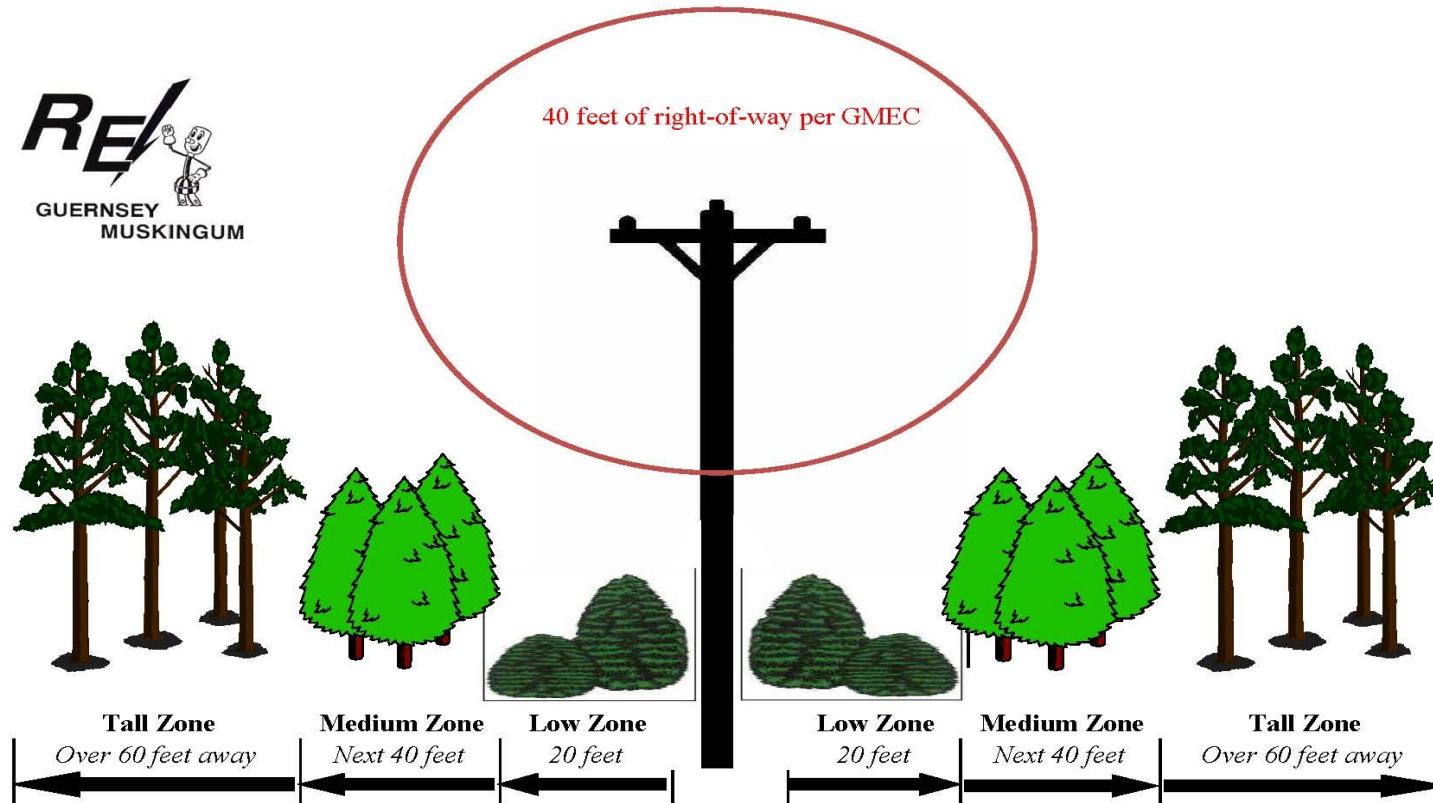


THE RIGHT TREE IN THE RIGHT PLACE



Tall Zone	Medium Zone	Low Zone - Utility Easement Area
Tall or large trees with a mature height of over 30 feet	Plant medium trees with a maximum mature height of under 30 feet	(Under wires) - It is better not to plant in this area. If you do, plant shrubs only or small low-growing ornamental trees with a maximum mature height of under 10 feet.

GMEC will maintain 20 feet in any direction around and anything above energized primary conductors on a five year cycle