



**A new meter collar device that makes
connecting a portable generator safe and easy**

Connecting A Portable Generator is Now Safe and Easy with GenerLink™



SAFE

GenerLink™ eliminates the use of extension cords and other connections that can be hazardous to customers and utility personnel.

GenerLink™ detects when a generator is operating and automatically disconnects from the utility grid, eliminating dangerous backfeed.

EASY

GenerLink™ is equipped with GenerLoc™, a unique interlocking power cord system that provides a quick and easy connection of a portable generator.

GenerLink™ is installed in 20 minutes or less by utility personnel and does not require the customer's presence.

GenerLink™ is easily installed behind a customer's electric meter and requires no rewiring of the customer's electrical system.

With GenerLink™, customers have the flexibility to run virtually any appliance, up to the capacity of their generator by simply energizing appliances from their breaker panel.

GENERLINK™ with GENERLOK™ SPECIFICATIONS AND TECHNICAL INFORMATION MODEL MA23-N/S

Physical:	Diameter:	6 ½ in.
	Depth:	5 ¼ in.
	Weight w/o surge:	5 ½ lbs
	Weight with surge:	5 ¾ lbs
	Socket Style:	Ring or Ring-less, 200 Amp, 4 jaw
Electrical:	Source Compatibility	200 Ampere or less
	Withstand Current:	10,000 Amperes rms symmetrical at .7 - .8 pf, 240 Volts, 60 Hz 6000 Amperes for 6 cycles at .7 - .8 pf, 240Volts, 60 Hz
	Generator Input:	7.2kW Continuous†, 120/240 Volt
	Connection:	Proprietary GenerLoc™ QuickConnect Cord‡
Operational:	Transfer Type:	Break-Before-Make
	Transfer Delay:	2-3 Seconds
	Life Cycle:	300,000 Operations
	Temperature Range:	-30°C to 60°C External Ambient
Features:	Generator Input Protection:	Generator Input Voltage ≥ 200 Volts Supplemental Overcurrent ≤ 30 A
	Utility Input Protection:	Utility Input Voltage ≥ 180 Volts Over-Temperature Trip ≥ 105°C
	Load Protection:	Integrated Whole-House Surge Protection Model MA23-S Only
	Status Indication:	Long-life LED indicators show utility power availability and/or fault presence

† 3 hours at 25° C ambient

‡ Sold Separately

* when protected by max 200 A circuit breaker in series with max 100 A branch circuit breaker

www.generlink.com

Global Power Products, Inc.
225 Arnold Road
Lawrenceville, GA 30044
www.globalpowerproducts.com
1.800.886.3837

How to Choose the Correct Generator

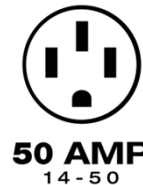


Three simple steps to selecting the correct generator to pair with your GenerLink transfer switch.

For more information on how to find out which generator is right for you, refer to the **GenerLink Operation Manual**.

1

Your generator must have one of these receptacles:



2

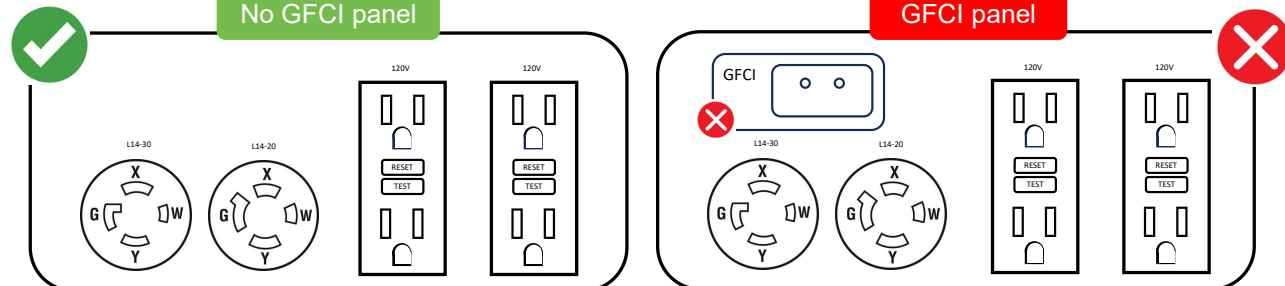
Your generator must be in these wattage ranges:



Generator Wattage
4800 – 9,600 Running Watts

3

Your generator must NOT have a full GFCI panel





GMEC/GENERLINK PRICE LIST

GENERLINK	COST	TAX	PRICE
30 Amp Non-Surge Protection (MA23-N)*	\$710.00	\$51.48	\$761.48
30 Amp Surge Protection (MA23-S)*	\$785.00	\$56.91	\$841.91
40 Amp Non-Surge Protection (MA24-N)*	\$835.00	\$60.54	\$895.54
40 Amp Surge Protection (MA24-S)*	\$910.00	\$65.98	\$975.98
*price includes 20' cable			

Cables

40' Cable	\$125.00
60' Cable	\$215.00
80' Cable	\$350.00
100' Cable	\$450.00

Please select the GenerLock cord connection which matches your generator.

